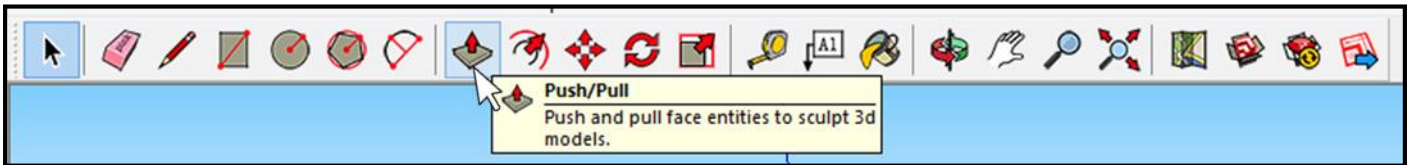




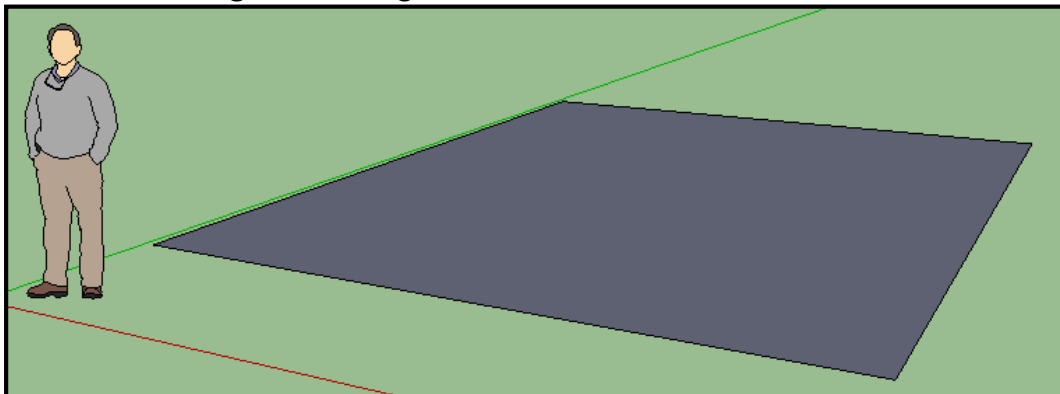
Using SketchUp

Follow the instructions to create a basic model of a house using SketchUp. Each instruction will use different tools. To find the right tool hover over each of the icon in the menu until you find the right one, like this:

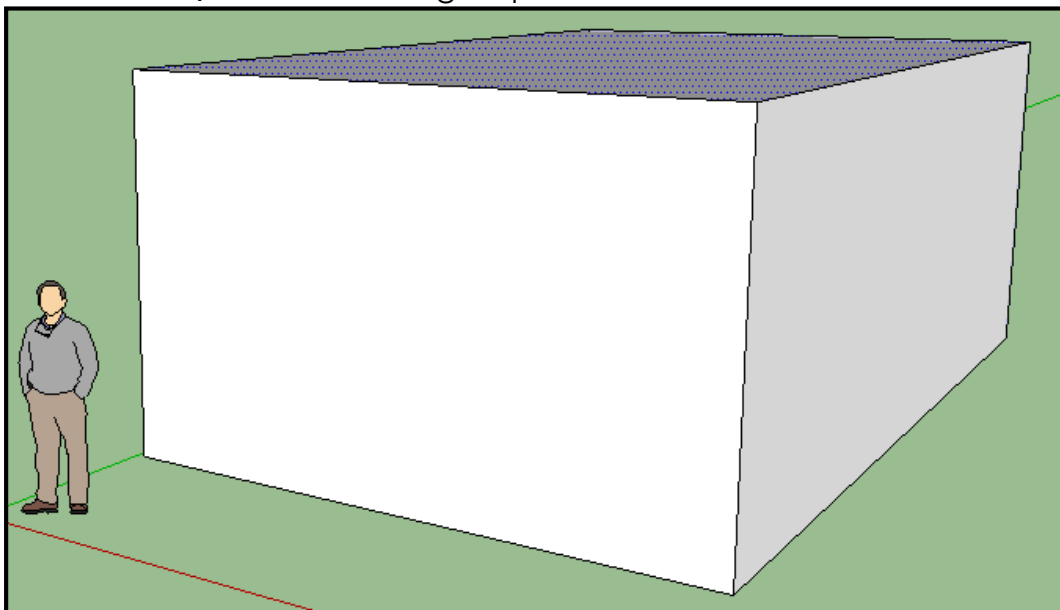


Got it?! . . . Then you're ready to start . . .

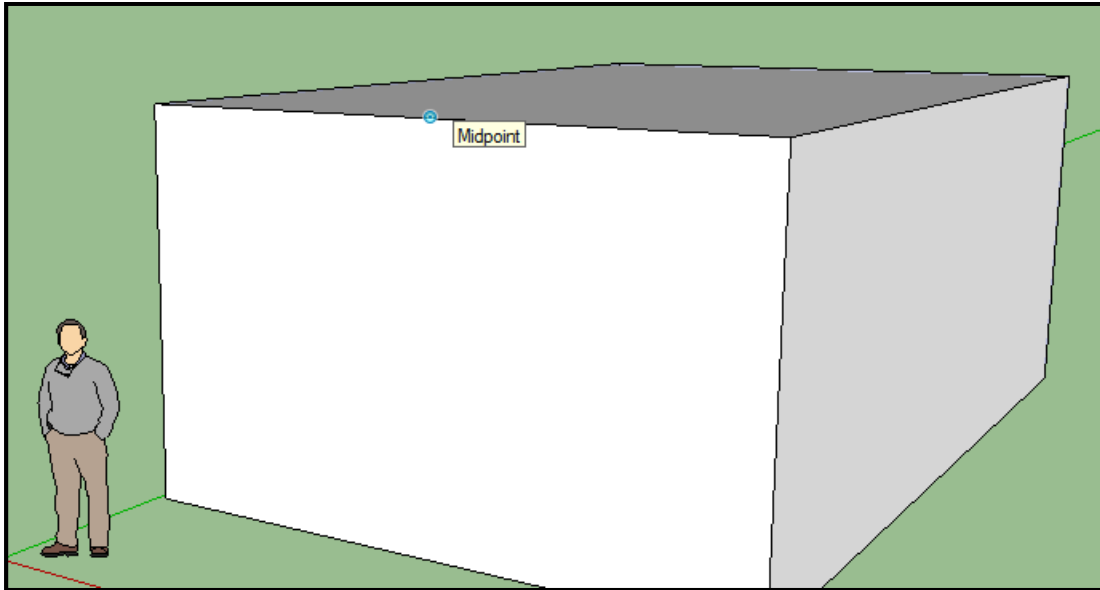
1. Draw a **rectangle** on the ground:



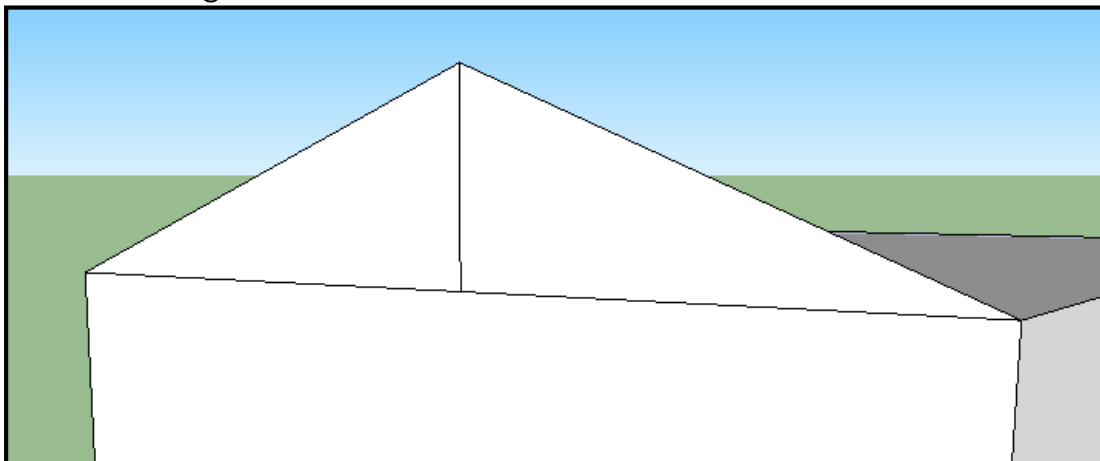
2. Use the **Push/Pull** tool to drag it up:



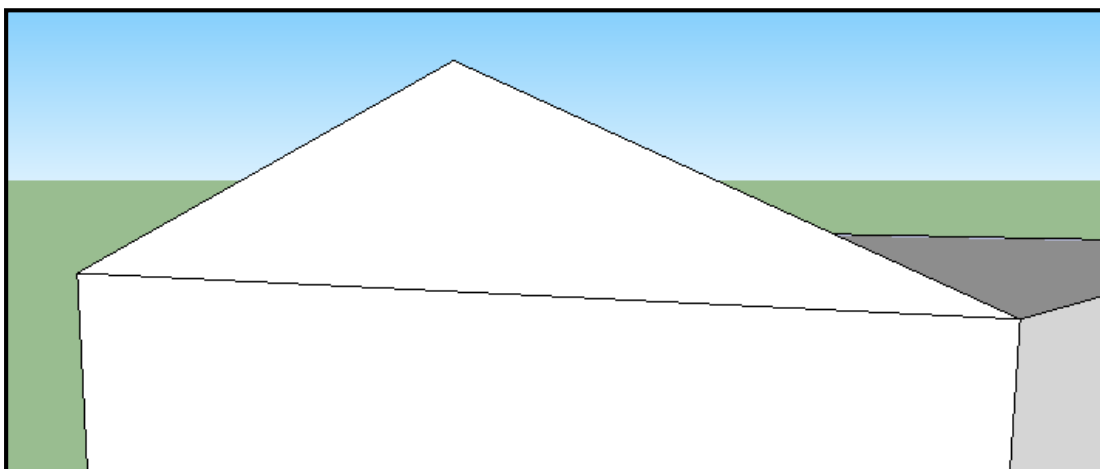
3. Use the **Pencil** tool and find the 'midpoint' by hovering your cursor along the top edge (it should jump to it).



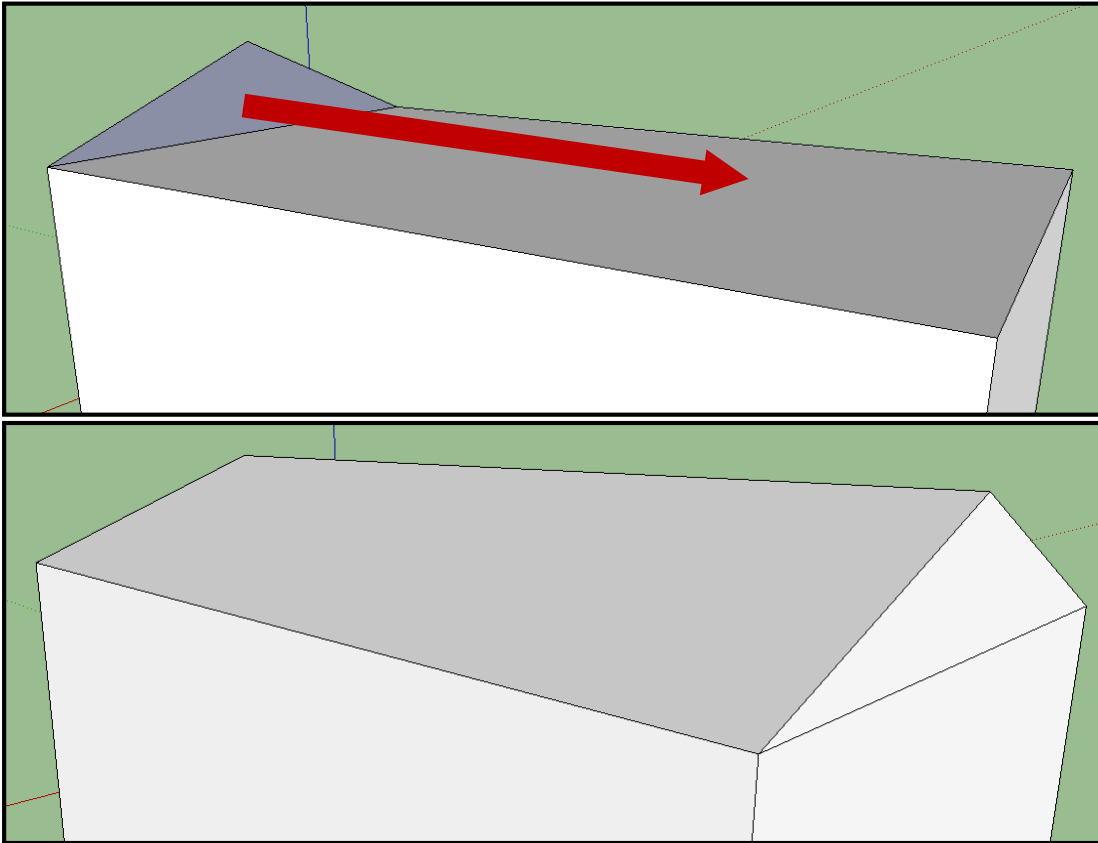
4. Draw a straight line directly upwards from the midpoint and then to the corners to make a triangle:



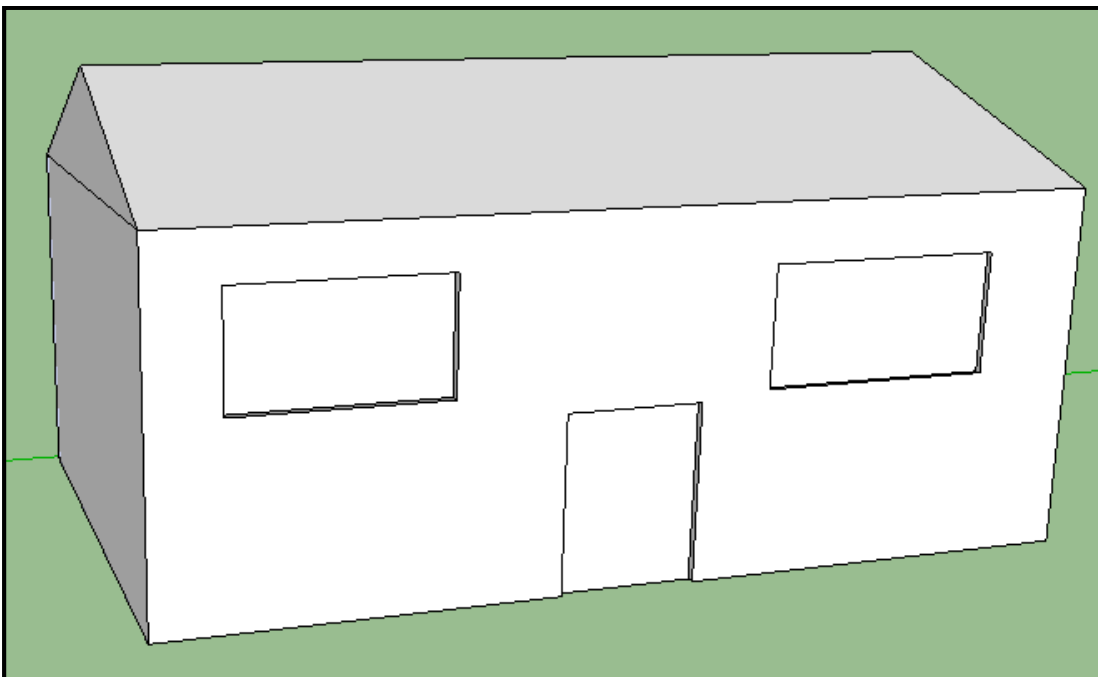
5. Use the **Eraser** to remove the middle line:



6. Use the **Orbit** tool to spin your house around then the **Push/Pull** tool again to drag your roof along.

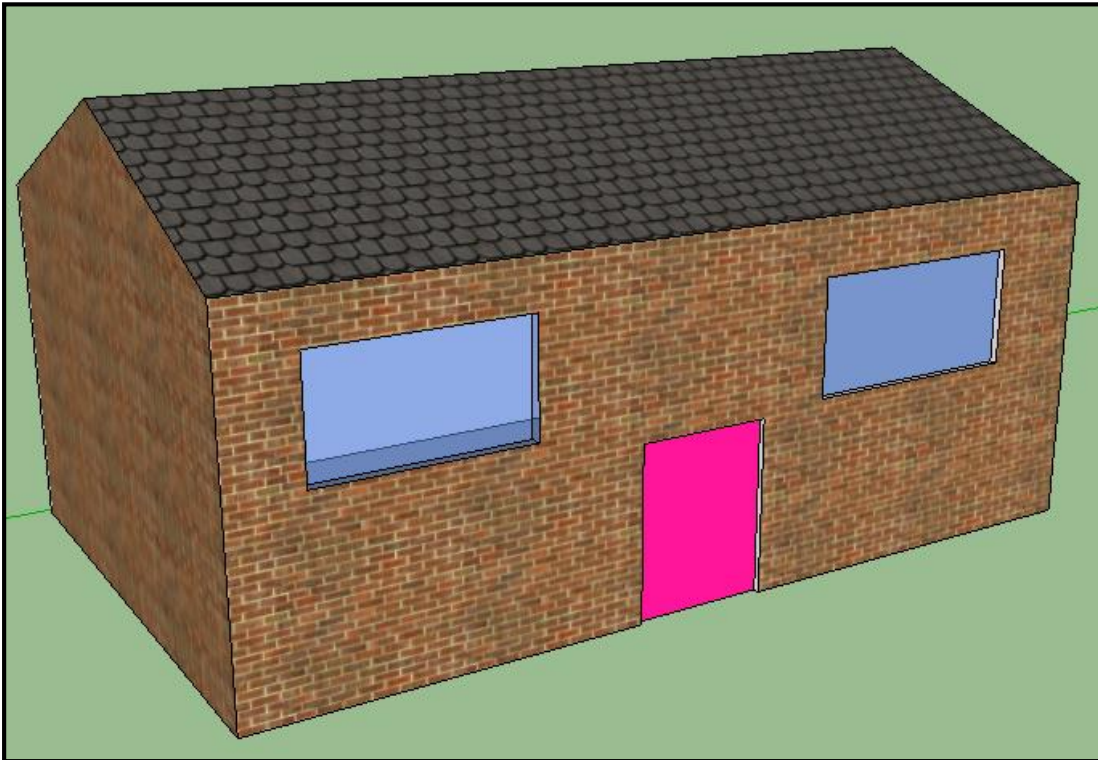


7. Draw some windows and doors:



(You may want to use the Push/Pull tool again to give them a little more depth)

8. Give your house some textures and colours using the **Paint Bucket**:



9. Add some outside areas like a garden, garage and pool:

